

Injury attendances to Manchester Royal Infirmary Emergency Department

April 2010 to March 2011

This report summarises recorded injury attendances to Manchester Royal Infirmary Emergency Department (ED) between April 2010 and March 2011.

Between April 2010 and March 2011 there were 23,583 injury attendances to Manchester Royal Infirmary ED. Males accounted for over six in ten (61%) of all attendances. The month with the highest attendances was July (n=2,346) ([Figure 1](#)). The majority (70%) of attendances were recorded as other accident; road traffic collisions (RTCs) accounted for the highest proportion (12%) of specified injury groups followed by assault (9%) and sports injury (9%) ([Table 1](#)).

For all injuries, the highest proportion of attendances were for persons aged 20-34 (37%) and 5-19 years (24%) ([Figure 2](#)). Over half (56%) of assault attendees were aged 20-34. Nearly half (47%) of RTC attendees were aged 20-34. Nearly two-thirds (64%) of sports injury attendees were aged 20-34 ([Figure 3](#)).

[Table 2](#) shows the location where injuries occurred. Over a quarter (27%) of injuries occurred in the home while 24% were recorded as other location; nearly a quarter (24%) occurred in a public place.

[Table 3](#) shows the arrival methods of attendances at Manchester Royal Infirmary ED. Over three-quarters (79%) arrived by means other than an ambulance,

while more than one in five (21%) arrived by ambulance.

The disposal of a patient can give an indication of the severity of the injuries sustained. Nearly half (45%) of attendees were discharged, over a third (35%) were referred and 10% were admitted ([Table 4](#)). Over half (53%) of RTC attendees were discharged while 5% were admitted. Four in ten (40%) of deliberate self harm (DSH) attendees were admitted ([Table 5](#)).

[Table 6](#) shows the ethnicity of attendees to Manchester Royal Infirmary ED. Over six in ten (62%) were white, 8% were Pakistani and 7% were black.

[Table 7](#) presents data for assault attendees to Manchester Royal Infirmary ED. Over three-quarters (77%) of attendees were male, nearly six in ten (56%) were aged 20-34 years. Two thirds (67%) of assault attendances occurred in a public place with over a third (34%) occurred at the weekend between the hours of 8pm and 4am.

[Figure 4 \(a-d\)](#) shows crude rates of attendance at Manchester Royal Infirmary ED by attendee's area of residence, in this case Middle Super Output Area (MSOA). The MSOAs with the highest crude rates are indicated beneath each figure.¹

¹ Population figures are drawn from mid-2008 population estimates from the Office for National Statistics.

Figure 1: Manchester Royal Infirmary ED: Total injury attendances by gender and month, April 2010 to March 2011

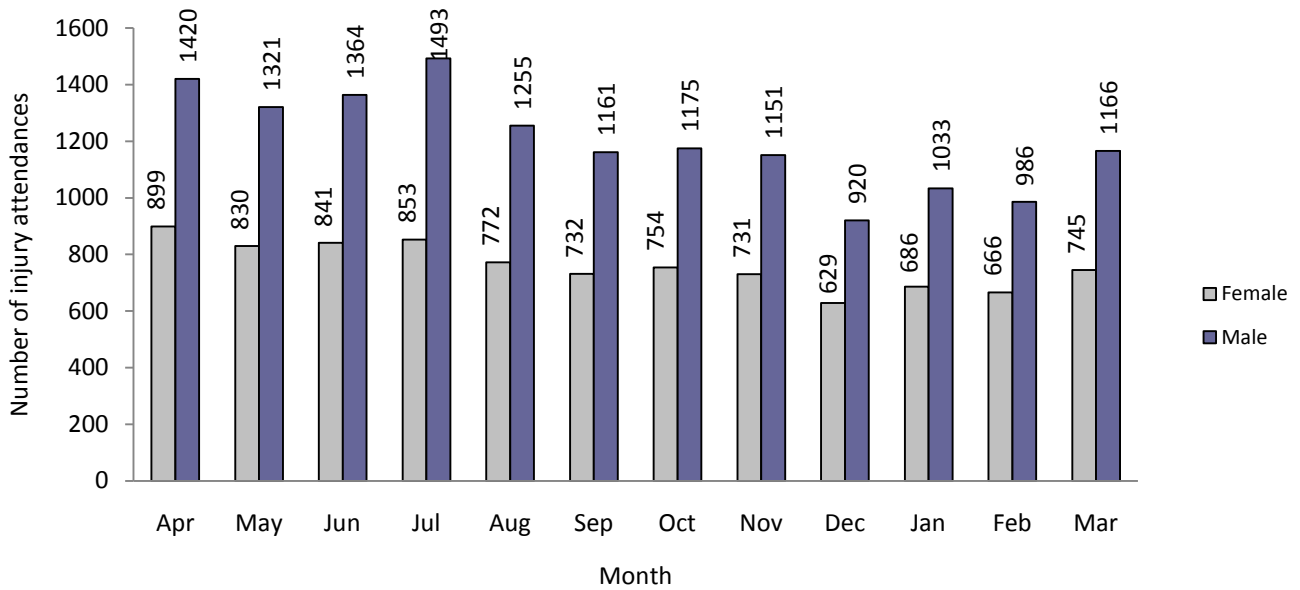


Table 1: Manchester Royal Infirmary ED: Total injury attendances by injury group and month, April 2010 to March 2011

Injury group	Apr	May	Jun	Jul	Aug	Sep	Oct	Nov	Dec	Jan	Feb	Mar	Total	%**
Other injury	1670	1483	1566	1758	1476	1273	1285	1211	1119	1208	1094	1265	16408	70
RTC	235	260	255	241	197	252	251	241	191	175	209	207	2714	12
Assault	175	190	182	177	186	178	191	182	168	154	145	163	2091	9
Sports injury	216	199	182	162	138	166	179	210	51	152	180	230	2065	9
DSH	23	19	20	8	30	24	23	38	20	30	24	46	305	1
Total	2319	2151	2205	2346	2027	1893	1929	1882	1549	1719	1652	1911	23583	100

*Firework injury has been included in other injury due to low numbers (n=8). **Percentages may not add to 100 due to rounding.

Figure 2: Manchester Royal Infirmary ED: Total injury attendances by age group and month, April 2010 to March 2011

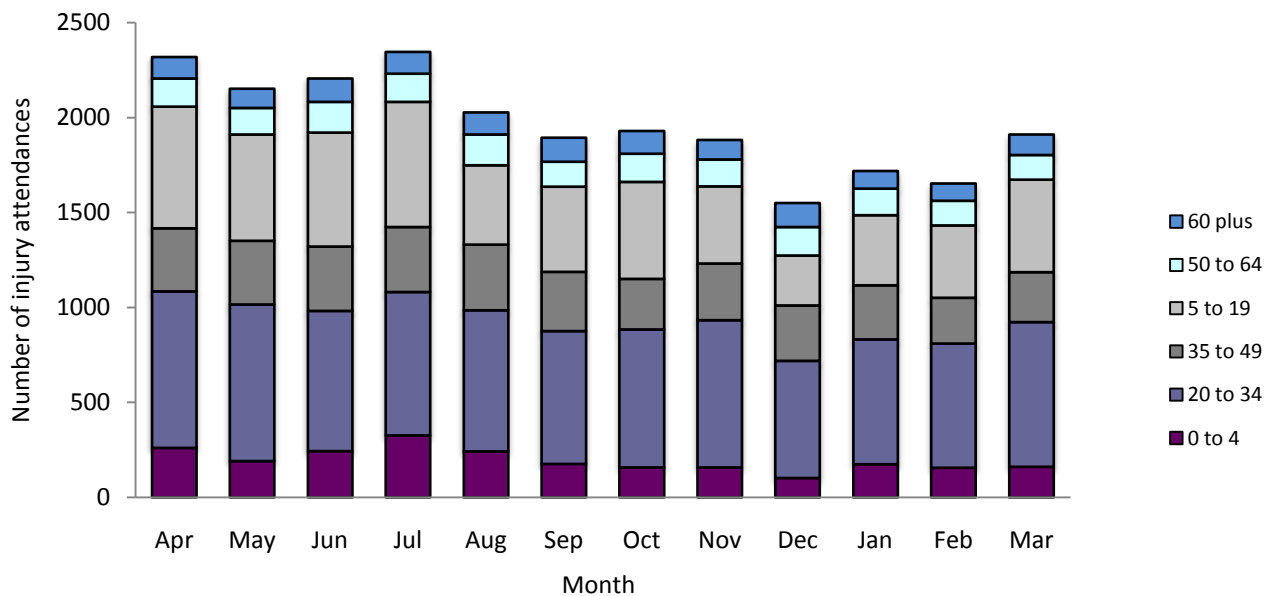


Figure 3: Manchester Royal Infirmary ED: Total injury attendances by age group and injury group, April 2010 to March 2011

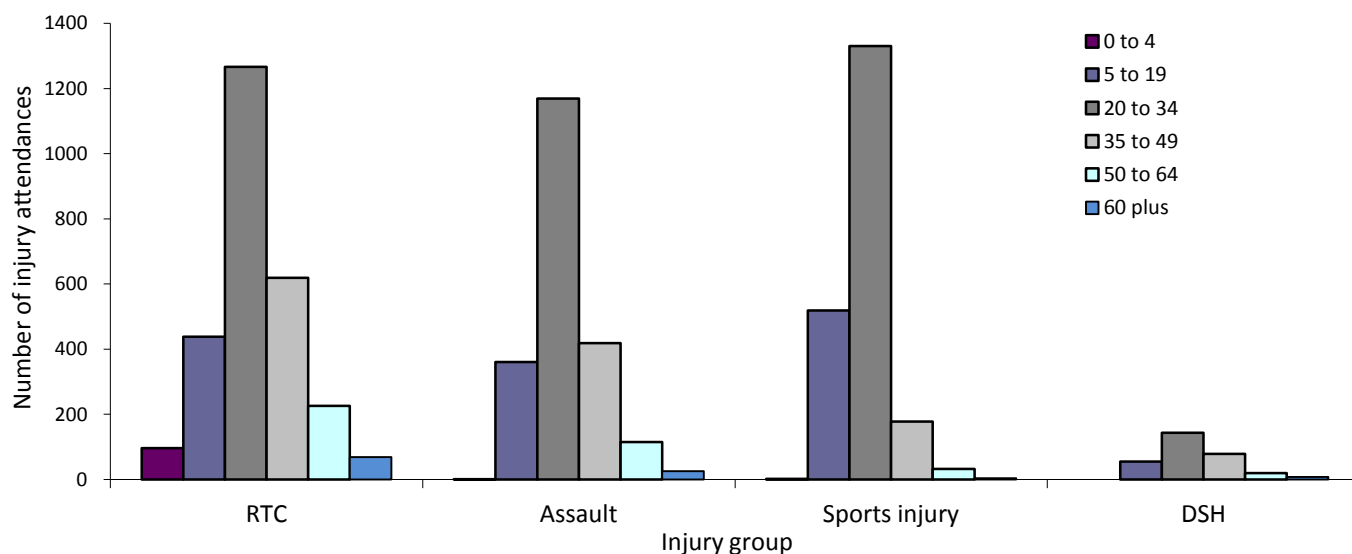


Table 2: Manchester Royal Infirmary ED: Total injury attendances by location of incident and injury group, April 2010 to March 2011²

Location	Assault		DSH		Other		RTC		Sports injury		Total	
	n	%	n	%	n	%	n	%	n	%	n	%
Unknown	***	***	299	98	**	0	2713	100	***	***	3016	13
Educational establishment	***	***	***	***	1039	6	***	***	59	3	1118	5
Home	204	10	***	***	6211	38	***	***	21	1	6436	27
Other	384	18	6	2	3472	21	***	***	1820	88	5682	24
Public place	1396	67	***	***	4132	25	**	***	163	8	5692	24
Work	85	4	***	***	1552	9	**	***	***	***	1639	7
Total	2091	100	305	100	16408	100	2714	100	2065	100	23583	100

*Firework injury has been included in other injury due to low numbers (n=8). **Percentages may not add to 100 due to rounding.

Table 3: Manchester Royal Infirmary ED: Total injury attendances by mode of arrival and month, April 2010 to March 2011

Mode	Apr	May	Jun	Jul	Aug	Sep	Oct	Nov	Dec	Jan	Feb	Mar	Total	%
Ambulance	474	435	445	493	418	494	465	405	361	343	346	372	5051	21
Other	1845	1716	1760	1853	1609	1399	1464	1477	1188	1376	1306	1539	18532	79
Total	2319	2151	2205	2346	2027	1893	1929	1882	1549	1719	1652	1911	23583	100

Table 4: Manchester Royal Infirmary ED: Total injury attendances by method of disposal and month, April 2010 to March 2011

Disposal	Apr	May	Jun	Jul	Aug	Sep	Oct	Nov	Dec	Jan	Feb	Mar	Total	%*
Discharged	1056	989	1069	1085	928	840	855	845	617	780	730	843	10637	45
Referral/follow-up	796	712	713	840	644	628	636	628	600	615	607	724	8143	35
Other	239	260	223	188	251	192	249	230	199	158	148	154	2491	11
Admitted	228	190	200	233	204	233	189	179	133	166	167	190	2312	10
Total	2319	2151	2205	2346	2027	1893	1929	1882	1549	1719	1652	1911	23583	100

*Percentages may not add to 100 due to rounding.

² Please note that all numbers less than five have been suppressed in line with patient confidentiality and if there is only one number <5 in a category then two numbers will be suppressed at the next level.

Table 5: Manchester Royal Infirmary ED: Total injury attendances by method of disposal and injury group, April 2010 to March 2011*

Disposal	Assault		DSH		Other		RTC		Sports injury		Total	
	n	%	n	%	n	%	n	%	n	%	n	%
Discharged	709	34	44	14	7511	46	1436	53	937	45	10637	45
Referral/follow-up	668	32	59	19	5822	35	685	25	909	44	8143	35
Other	448	21	79	26	1342	8	460	17	162	8	2491	11
Admitted	266	13	123	40	1733	11	133	5	57	3	2312	10
Total	2091	100	305	100	16408	100	2714	100	2065	100	23583	100

*Percentages may not add to 100 due to rounding.

Table 6: Manchester Royal Infirmary ED: Total injury attendances by ethnicity and month, April 2010 to March 2011*

Ethnicity	Apr	May	Jun	Jul	Aug	Sep	Oct	Nov	Dec	Jan	Feb	Mar	Total	%
White	1430	1306	1311	1427	1252	1166	1200	1201	955	1098	1034	1210	14590	62
Pakistani	180	172	212	194	175	148	152	134	122	117	138	156	1900	8
Other ethnic group	185	183	153	185	136	118	152	121	132	106	121	154	1746	7
Black	150	148	164	178	153	125	127	135	101	134	105	147	1667	7
Not known	129	119	117	106	146	127	119	113	106	72	73	57	1284	5
Mixed	71	57	74	67	43	58	49	38	43	44	54	48	646	3
Asian other	55	48	53	61	33	52	48	48	26	50	44	54	572	2
Indian	41	43	46	55	29	33	31	30	21	34	31	32	426	2
Not stated	39	34	28	28	26	31	24	24	13	22	21	24	314	1
Chinese	16	23	23	21	18	24	12	25	22	20	14	18	236	1
Bangladeshi	23	18	24	24	16	11	15	13	8	22	17	11	202	1
Total	2319	2151	2205	2346	2027	1893	1929	1882	1549	1719	1652	1911	23583	100

*Percentages may not add to 100 due to rounding.

Table 7: Manchester Royal Infirmary ED: Total assault and injury attendances by location, age group and time, April 2010 to March 2011

Location*	Assault attendees		All injury attendees (n=23,583)
	n	%	%
Other	384	18	24
Public place	1396	67	24
Home	204	10	27
Work	85	4	7
Educational establishment	20	1	5
Gender	n	%	%
Female	479	23	39
Male	1612	77	61
Age group*	n	%	%
0 - 4	***	***	10
5 - 19	361	17	24
20 - 34	1169	56	37
35 - 49	419	17	15
50 - 64	115	5	7
65 plus	***	***	6
Day and time of attendance	n	%	%
Weekends**	582	28	13
Weekend day	363	17	21
Weekdays	1146	55	66

*Location was not provided in two assault cases **8pm to 4am, Friday night/Saturday morning; Saturday night/Sunday morning; Sunday night/Monday morning

Author: Ian Warren, published May 2011

For further information please contact: Centre for Public Health, Research Directorate, Liverpool John Moores University, 2nd Floor, Henry Cotton Building, 15-21 Webster Street, Liverpool, L3 2ET, Tel: 0151 231 4513 or Email: i.j.warren@ljmu.ac.uk

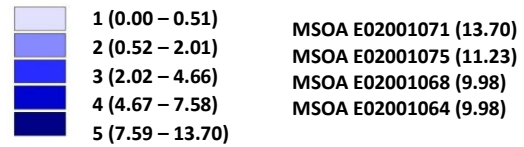
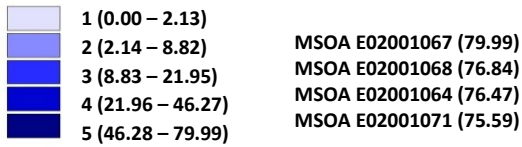
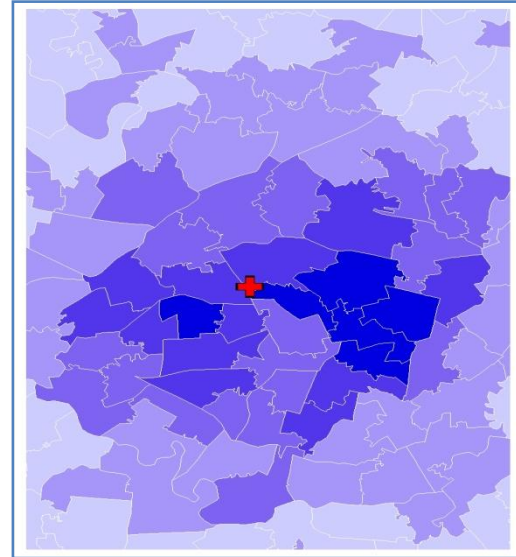
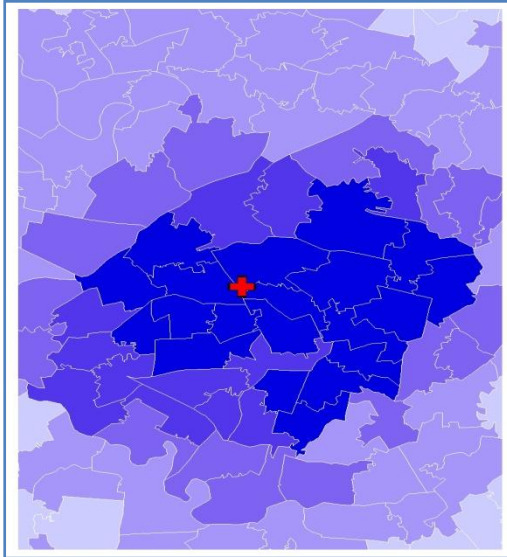
Website: www.tiig.info (data requests should be made through the website)

Figure 4a,b,c,d: Middle Super Output Area of residence for injury attendances to Manchester Royal Infirmary ED. Quintiles of crude rates per 1,000 population, April 2010 to March 2011

a) All injury attendances: quintiles of crude rates per 1,000 population b) RTC: quintiles of crude rates per 1,000 population

✚ Manchester Royal Infirmary ED

✚ Manchester Royal Infirmary ED



c) Assault: quintiles of crude rates per 1,000 population

d) Sports injury: quintiles of crude rates per 1,000 population

✚ Manchester Royal Infirmary ED

✚ Manchester Royal Infirmary ED

